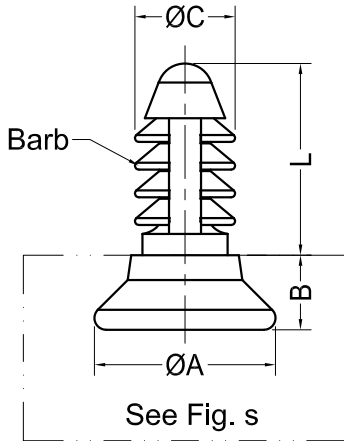


Assembly Part



RECOMMENDED MOUNTING  
SCREW THREAD HOLE

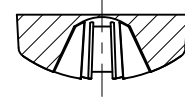
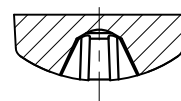
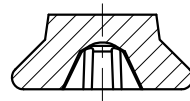
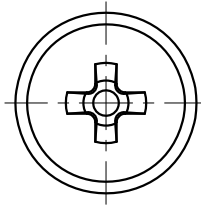


Fig. 1

Fig. 2

Fig. 3



Notes:

1. Material: PA66 UL94V2;
2. RoHS Compliant;
3. Hole: Threaded Hole;
4. Patent;
5. The Head style Fig.2 and Fig.3 are available if needed.

Part No.	Article No.	Part No.	Article No.	A	B	C	L	D	E	F	Barb Qty.	Push In force MAX.	Pull out force MIN.	Hole	Fig.
50538	GTS-M3-6	50542	GTS-M3-6N	5.5	2.5	2.8	6.0	3.5	2.6	8.0	4	30N	50N	Threaded M3	1
50682	GTS-M3-8	50685	GTS-M3-8N				8.0			10.0					
50683	GTS-M3-10	50686	GTS-M3-10N				10.0			12.0					
50684	GTS-M3-12	50687	GTS-M3-12N				12.0			14.0					
50483	GTS-M4-6.5	50543	GTS-M4-6.5N	7.3	3.0	3.7	6.5	4.5	3.0	8.5	6	35N	90N	Threaded M4	1
50688	GTS-M4-8.5	50691	GTS-M4-8.5N				8.5			10.5					
50689	GTS-M4-10	50692	GTS-M4-10N				10.0			12.0					
50690	GTS-M4-12	50693	GTS-M4-12N				12.0			14.0					
50674	GTS-M4-14	50678	GTS-M4-14N				14.0			16.0					
50539	GTS-M5-9	50544	GTS-M5-9N	8.5	3.5	4.7	9.0	5.5	3.6	11.0	4	35N	100N	Threaded M5	1
50694	GTS-M5-12	50696	GTS-M5-12N				12.0			14.0					
50695	GTS-M5-15	50697	GTS-M5-15N				15.0			17.0					
50675	GTS-M5-18	50679	GTS-M5-18N				18.0			20.0					
50540	GTS-M6-10.5	50545	GTS-M6-10.5N	10.0	4.5	5.7	10.5	6.5	4.6	12.5	4	35N	120N	Threaded M6	1
50698	GTS-M6-13.5	50700	GTS-M6-13.5N				13.5			15.5					
50699	GTS-M6-15	50701	GTS-M6-15N				15.0			17.0					
50676	GTS-M6-18	50680	GTS-M6-18N				18.0			20.0					
50541	GTS-M8-12.5	50546	GTS-M8-12.5N	13.0	5.5	7.5	12.5	8.5	5.6	14.5	4	55N	180N	Threaded M8	1
50702	GTS-M8-16	50704	GTS-M8-16N				16.0			18.0					
50703	GTS-M8-18	50705	GTS-M8-18N				18.0			20.0					
50677	GTS-M8-20	50681	GTS-M8-20N				20.0			22.0					
Color: Black		Color: Natural													

Gecko International Co.

DATE

2019-11-28

DIMENSION

TOLERANCE

TITLE

PUSH SCREW

SCALE

FIT

$L \leq 4$

$\pm 0.10$

ARTICLE NO.

GTS-M-L

MOLD NO.

/

DRAW

JF

UNIT

MM

$4 < L \leq 15$

$\pm 0.20$

PART NO.

SEE TABLE

MATERIAL

SEE NOTES

DESIGN

JF

VERSION

A0

$15 < L \leq 50$

$\pm 0.30$

DWG NO.

E5053-M

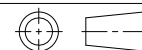
COLOR

SEE TABLE

APPROVAL

FDL

VIEW



$50 < L \leq 100$

$\pm 0.40$