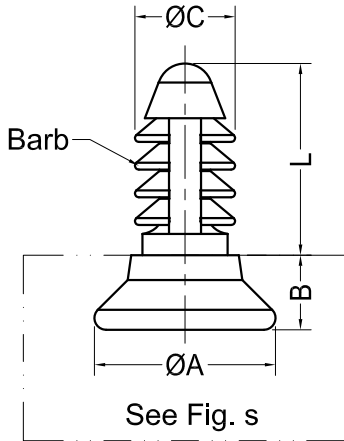
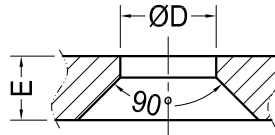


Assembly Part



See Fig. s



RECOMMENDED MOUNTING
SCREW THREAD HOLE

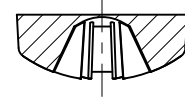
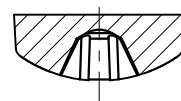
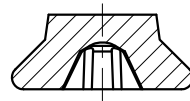
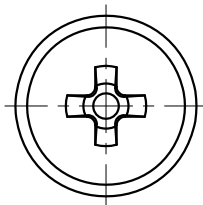


Fig. 1

Fig. 2

Fig. 3



Notes:

1. Material: PA66 UL94V2;
2. RoHS Compliant;
3. Hole: Threaded Hole;
4. Patent;
5. The Head style Fig.2 and Fig.3 are available if needed.

Part No.	Article No.	Part No.	Article No.	A	B	C	L	D	E	F	Barb Qty.	Push In force MAX.	Pull out force MIN.	Hole	Fig.
50538	GTS-M3-6	50542	GTS-M3-6N	5.5	2.5	2.8	6.0	3.5	2.6	8.0	4	30N	50N	Threaded M3	1
50682	GTS-M3-8	50685	GTS-M3-8N				8.0			10.0					
50683	GTS-M3-10	50686	GTS-M3-10N				10.0			12.0					
50684	GTS-M3-12	50687	GTS-M3-12N				12.0			14.0					
50483	GTS-M4-6.5	50543	GTS-M4-6.5N	7.3	3.0	3.7	6.5	4.5	3.0	8.5	6	35N	90N	Threaded M4	1
50688	GTS-M4-8.5	50691	GTS-M4-8.5N				8.5			10.5					
50689	GTS-M4-10	50692	GTS-M4-10N				10.0			12.0					
50690	GTS-M4-12	50693	GTS-M4-12N				12.0			14.0					
50674	GTS-M4-14	50678	GTS-M4-14N				14.0			16.0					
50539	GTS-M5-9	50544	GTS-M5-9N	8.5	3.5	4.7	9.0	5.5	3.6	11.0	4	35N	100N	Threaded M5	1
50694	GTS-M5-12	50696	GTS-M5-12N				12.0			14.0					
50695	GTS-M5-15	50697	GTS-M5-15N				15.0			17.0					
50675	GTS-M5-18	50679	GTS-M5-18N				18.0			20.0					
50540	GTS-M6-10.5	50545	GTS-M6-10.5N	10.0	4.5	5.7	10.5	6.5	4.6	12.5	4	35N	120N	Threaded M6	1
50698	GTS-M6-13.5	50700	GTS-M6-13.5N				13.5			15.5					
50699	GTS-M6-15	50701	GTS-M6-15N				15.0			17.0					
50676	GTS-M6-18	50680	GTS-M6-18N				18.0			20.0					
50541	GTS-M8-12.5	50546	GTS-M8-12.5N	13.0	5.5	7.5	12.5	8.5	5.6	14.5	4	55N	180N	Threaded M8	1
50702	GTS-M8-16	50704	GTS-M8-16N				16.0			18.0					
50703	GTS-M8-18	50705	GTS-M8-18N				18.0			20.0					
50677	GTS-M8-20	50681	GTS-M8-20N				20.0			22.0					
Color: Black		Color: Natural													

							DATE	2019-11-28	DIMENSION	L ≤ 4	TOLERANCE	±0.10
TITLE	PUSH SCREW					SCALE	FIT	L ≤ 4		±0.10		
ARTICLE NO.	GTS-M-L	MOLD NO.	/	DRAW	JF	UNIT	MM	4 < L ≤ 15		±0.20		
PART NO.	SEE TABLE	MATERIAL	SEE NOTES	DESIGN	JF	VERSION	A0	15 < L ≤ 50		±0.30		
DWG NO.	E5053-M	COLOR	SEE TABLE	APPROVAL	FDL	VIEW			50 < L ≤ 100	±0.40		